

INS INTELLIMETAL SOLUTIONS



ISO 9001 :2015



Intellimetal Solutions

2nd floor, Block : EP-Y6, Sector - V
Salt Lake Electronic Complex, Kolkata - 700091

For details contact:

ac@intellimetalsolutions.net
ar@intellimetalsolutions.net
dkm@intellimetalsolutions.net

A Brief note from our team

In a rapidly modernising world Engineers are at the forefront of the evolution, designing and constructing ever grander and more complex undertakings to push the boundaries of what's achievable. In Intellimetal, these vast endeavours have been equalled by investments in innovation, software and most importantly – intellectual knowledge.

While these efforts are no longer exclusive to the traditionally dominant western nations, our quest remains to find the means to match and even exceed previous works by harnessing own resources and advantages.

As a result, a team of humble engineers have come together to make an integrated march towards excellence in engineering, technology and quality. As I reflect on our journey over the past years, I am filled with immense pride and gratitude. Our company has grown significantly, and it is all because of you – our clients. Each one of you has played a critical role in our success, and I am excited about the future we are building together. Let's continue to innovate and strive for excellence in everything we do.

Introduction to Intellimetal Solutions



Design & Engineering

Involving the creation and development of systems, structures, or products through detailed planning, technical drawings, and specifications to ensure functionality, safety, and efficiency.



Manufacturing & Supply

Involves the production of equipment or components as per design specifications, followed by quality checks and timely delivery to the project site.



Quality & Improvement

Ensures consistent product/service standards through regular checks and focuses on continuous enhancement by identifying gaps, analyzing root causes, and implementing corrective actions for better performance and improve overall efficiency and customer satisfaction



Projects Management

Involving the process of planning, organizing, and overseeing tasks and resources to achieve specific goals within a defined timeframe and budget. It involves setting objectives, managing teams, tracking progress, and ensuring successful project completion.



Supervision of Erection & Commissioning

involves overseeing the installation, alignment, testing, and startup of equipment and systems to ensure they are assembled and functioning as per design specifications. It ensures safety, quality, and timely execution for smooth handover to operations..

Design Engineering

1

Mechanical - Mechanical Design Engineering involves the creation and development of mechanical systems and components using engineering principles, CAD tools, and analysis to ensure functionality, reliability, and manufacturability.

2

Civil - Civil Design & Engineering involves analyzing, and designing infrastructure projects such as buildings, roads, bridges, drainage systems, and industrial facilities. It includes preparing detailed drawings material specifications, and ensuring compliance with safety, environmental, and regulatory standards to deliver cost-effective and sustainable solutions.

3

Structural - Structural design and engineering involve the analysis, planning, and design of structures to ensure they are safe, stable, and capable of withstanding all applied loads. It includes selecting appropriate materials, designing structural elements, and ensuring compliance with relevant codes and standards for strength, durability, and performance.

4

Electrical & Automation - Electrical Design & Engineering involves the planning, designing, and development of electrical systems and components for industrial, commercial, and infrastructure projects. It includes preparing single-line diagrams, load calculations, cable sizing, earthing layout, panel design, and detailed drawings, ensuring compliance with relevant standards and safety regulations. The process supports efficient power distribution, control systems, and automation to meet the project's functional and operational requirements.

5

Utility & Services - Involves the planning, designing, and integration of essential support systems required for the smooth functioning of industrial plants or infrastructure projects. This includes systems such as compressed air, water supply, effluent drainage, steam, fuel handling, HVAC, and electrical distribution. The focus is on reliability, efficiency, and compliance with safety and environmental standards, ensuring optimal performance and sustainability of the overall facility.

Intellimetal at a glance

Developing state-of-the-art engineering and service solutions



Supporting our customers' operations with life-cycle services



Empowering our customers to drive through green transition



Elevating customer operations with state-of-the-art technologies

Mechanical Engineering

A. Material Handling System

1. Belt Conveyor System
2. Equipment for Raw Material Handling
 - i) Technological Structure
 - ii) Pulley & Idlers
 - iii) Belt Take-up Arrangement
3. Screw Conveyor
4. Chain Conveyor
5. Belt Feeder
6. Shuttle Conveyor

7. Apron Feeder
8. Travelling Tripper
9. Different type of Gate
10. Bucket Elevator
11. Screw Conveyor
12. Flap & Diverter Gate
13. Rod & Motorized Rack & Pinion Gate
14. High Angle Conveyor

B. Metal Handling System

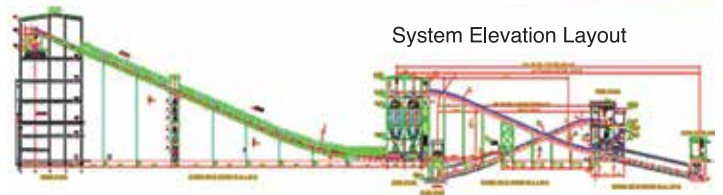
1. Scrap Bucket
2. Hot Metal Charging Ladle
3. Hot Metal Ladle
4. Ladle Transfer Car
5. Ladle Tilting Device
6. Ladle Bel Arm
7. Motorized Winch
8. Scrap Charging Car

Process Engineering

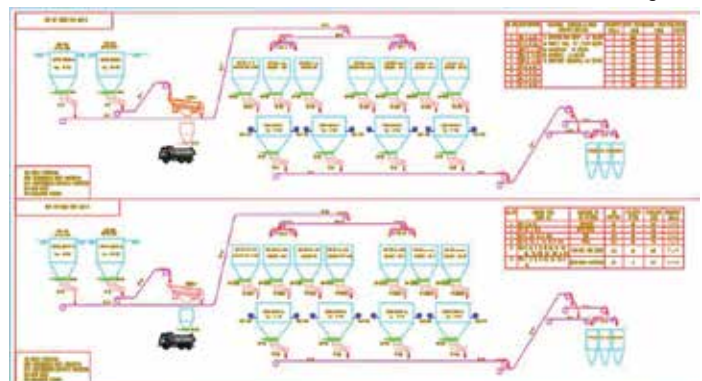
System Plan Layout



System Elevation Layout



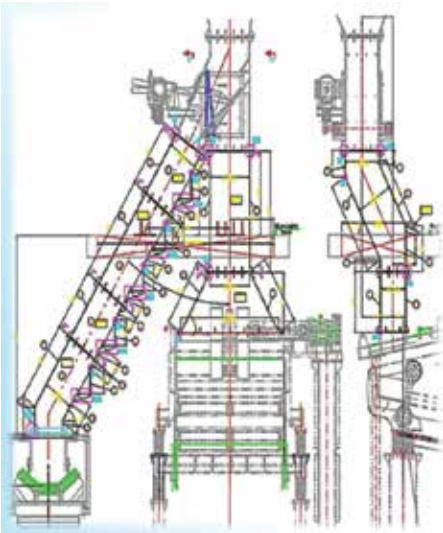
Process Flow Diagram



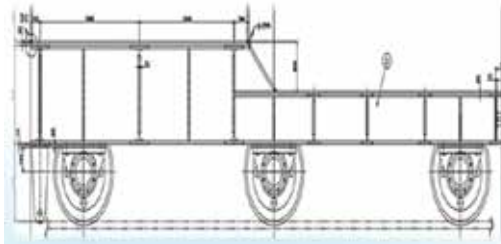
Belt Conveyor System



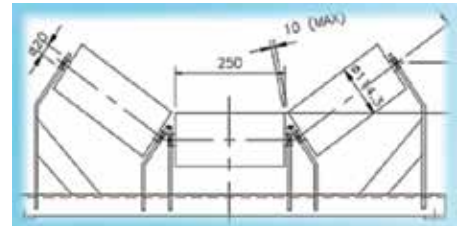
Equipment Engineering



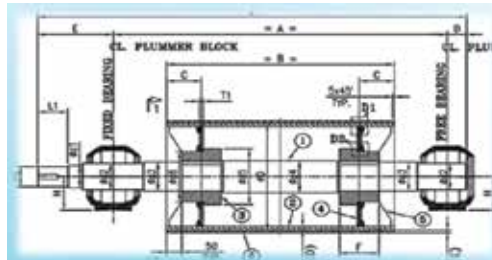
Interconnecting Chute



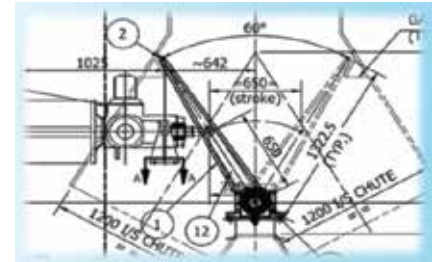
Ladle Transfer Car



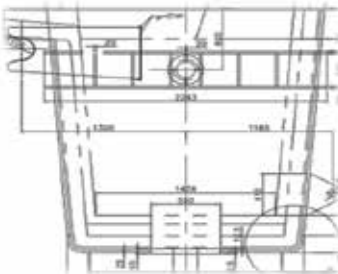
Conveyor Idlers



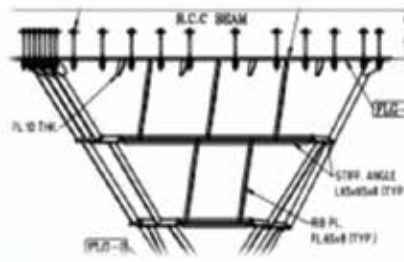
Conveyor Pulley



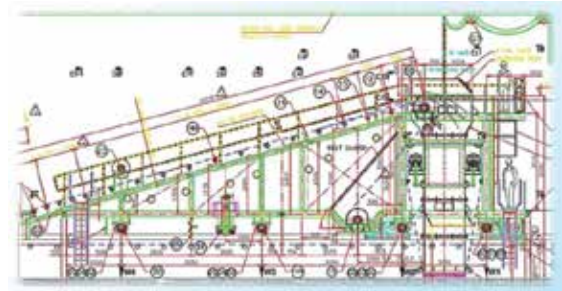
Flap Gate



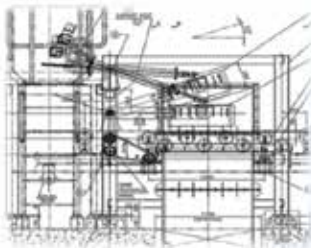
Hot Metal Ladle



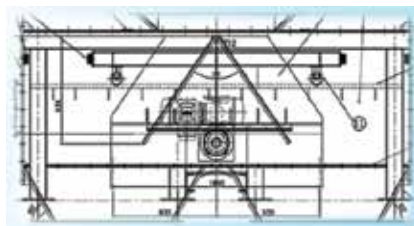
Steel Hopper



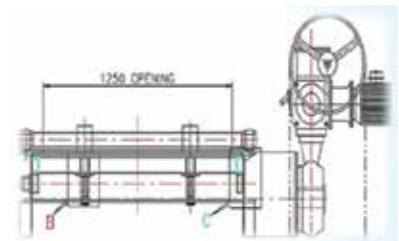
Travelling Tripper



Plough Feeder



Prism Gate



Rack & Pinion Gate

Structural Engineering

Structural Design

We provide structural design services to various industries and firms within and outside India. With over decade of experience in design of Steel and RC structures using Indian, American and British codes in national and international projects, we are well aquatinted with the industrial needs and standard. We are well familiarized with the latest and advance requirements of design codes of various countries. With our expertise in structural design, we assure the best service to our clients within and outside India. We provide structural design services to following industries and looking forward to expand our scope.

Industrial structures for Oil and Gas Refineries, Chemical, Petro-chemical, Power plants, Fertilizers, Material Handling projects etc. such as pipe rack, process structures, transfer tower, equipment supporting structures, cooling tower, control room, bunkers and silos, other RC buildings in plant, Isolated foundations, mat foundations, pile foundations, machine foundations, drains and pits etc. using IS, ACI, AISC, BS code of practice.

Private and Government residential housing and commercial sectors. Solution related to expansion of existing industrial facilities.

Connection Design

Connections, being an inseparable part of the industrial and commercial structures, we have expertise in connection design. The connection design based on AISC, BS and Indian code of design has been extensively done by us for various projects. Connection design is done using manually developed spread sheets as well as connection design software's.

3D Structural Modeling

Looking at the complexity, client requirement and to cope up with the functional & erectable requirements of the structures, 3D modeling has become a necessity of modern era. Hence looking at this aspect, we serve for precise and detailed 3D modeling requirements of clients by today's latest proficient software's Staad & Advance Steel and experienced staff.

Structural Drafting/ Generating layout and General Arrangement Drawings

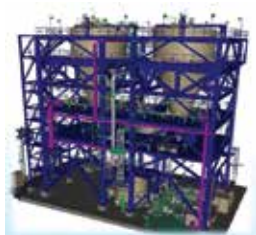
We have well experienced staff in 2D and 3D drafting using various drafting software's AutoCAD & Tekla etc.

Detail/Fabrication Drawings:

Detailed fabrication drawings are prepared keeping in mind the basic concepts of fabrication and erection point of view using 2D and 3D software's **AutoCAD, Advance Steel & Tekla etc.** We aim to meet the client's requirement of drafting through our well versed staff for preparation of fabrication drawings and checkers for the correctness and quality of the submittal outputs.



3D-Staad Model of Process structure



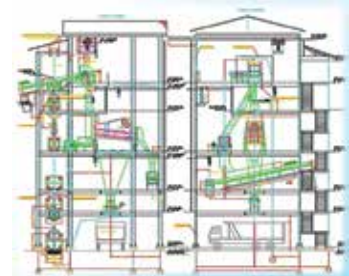
3D-Model of process structure supporting Vertical Vessels



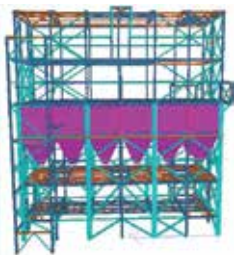
Silo Building



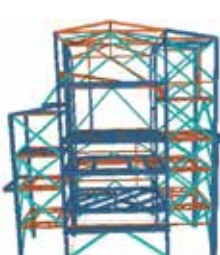
Transfer House TH-1



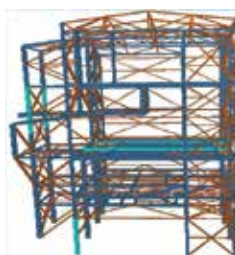
Screen Building



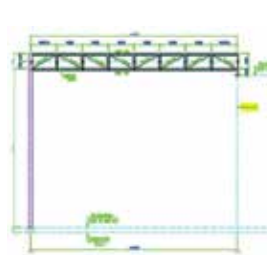
3D-Staad Model of Silo Building



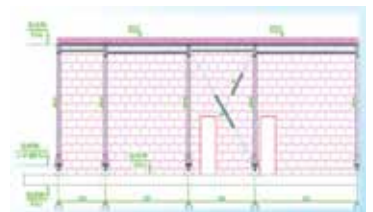
3D-Staad Model of Transfer House



3D-Staad Model of Screen Building



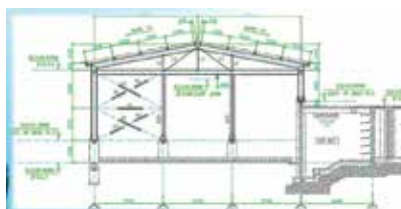
Cable Gallery



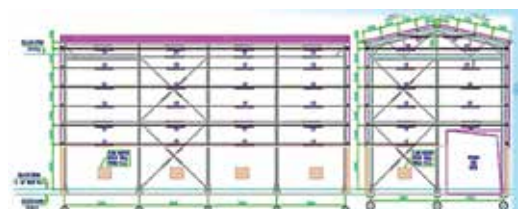
Sub-station Building



Conveyor Structure [Gallery & Trestle]



Pump House



Structural Building for Water Complex

Civil Engineering

Civil Design & Engineering is a critical discipline that involves the planning, designing, and detailing of infrastructure, buildings, and industrial facilities. It encompasses a wide range of technical services required to ensure the structural integrity, safety, functionality, and compliance of any project with applicable standards and regulations.

Site Planning & Development

- > Topographical survey and analysis
- > Land grading and leveling design
- > Site layout planning considering operational workflow, access, drainage, and aesthetics
- > Earthwork estimation and optimization

Structure Design

- > Design of RCC (Reinforced Cement Concrete) and steel structures as per IS/IRC/BS/ACI standards
- > Foundation design (shallow, deep, pile, raft)
- > Retaining structures, water tanks, trenches, and culvert design

Architectural & Building Design

- > Preparation of general arrangement drawings (GADs)
- > Building floor plans, elevations, and sections
- > Detailed design of industrial buildings, control rooms, utility buildings, and administrative offices
- > Integration of HVAC, plumbing, and electrical systems into the architectural layout

Infrastructure & Utility Design

- > Internal road and drainage network design
- > Stormwater and sewage management
- > Utility corridor and pipe rack layout
- > Cable trench and underground utility planning

Water Retaining and Specialized Structures

- > Design of sumps, reservoirs, clarifiers, and sedimentation basins
- > Structures for water treatment and waste management facilities

Documentation & BOQ Preparation

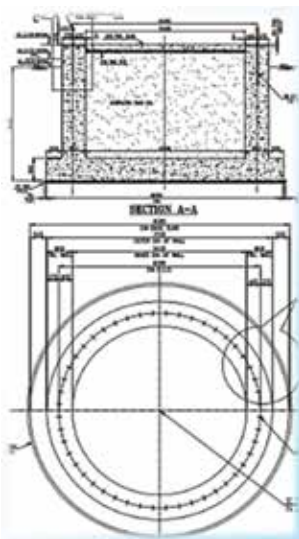
- > Preparation of detailed construction drawings
- > Bill of quantities (BOQ) and estimation
- > Technical specifications and design basis reports

3D Modeling & BIM Integration (if applicable)

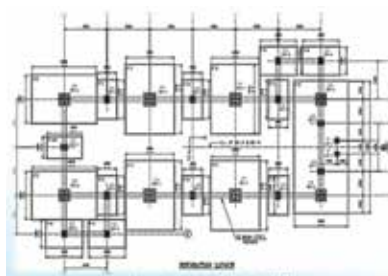
- > 3D visualization of civil structures
- > Clash detection and coordination with other engineering disciplines using BIM platforms

Design Compliance & Codes

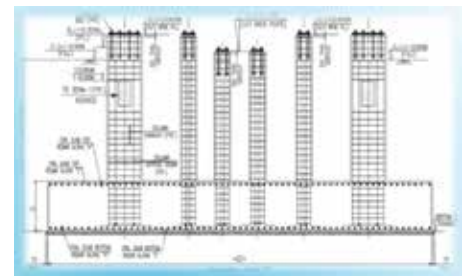
- > Adherence to national and international codes such as IS codes, NBC, ACI, ASCE, Eurocode, etc.
- > Seismic zone and wind zone-specific designs
- > Coordination with geotechnical reports and soil investigation data



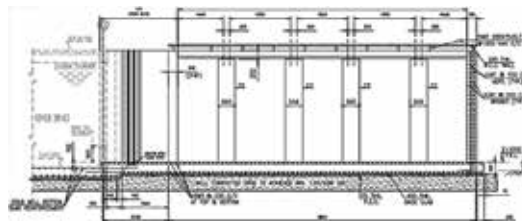
Foundation for 35 Mtr Steel Chimney



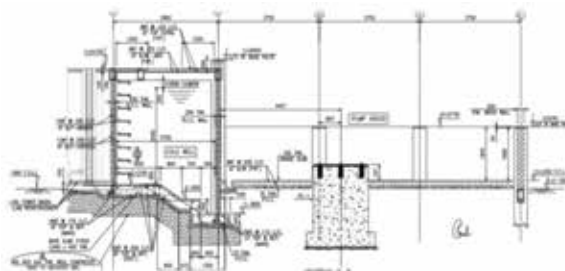
Foundation Layout Silo Building



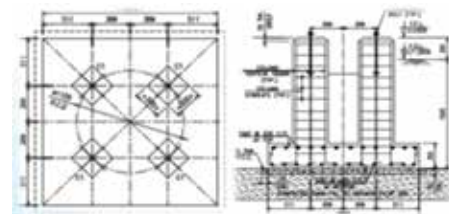
RC Details of Foundation



Foundation for Cooling Tower



Foundation for Pump House Building



Foundation for Air Receiver

Project Management

Initiation:

- > Define the project scope, objectives, and feasibility.
- > Identify key stakeholders and prepare the project charter.

Planning:

- > Develop a detailed project plan covering schedules, budgets, resources, risk management, and communication.
- > Define the work breakdown structure (WBS) and assign responsibilities

Execution:

- > Mobilize teams and resources to carry out the project plan.
- > Ensure effective coordination among different stakeholders.

Monitoring & Controlling:

- > Track progress against the baseline schedule and budget.
- > Manage risks, changes, and ensure quality standards are met.

Closure:

- > Complete all project activities and deliverables.
- > Obtain formal acceptance and document lessons learned.

Objectives of Project Management:

- > Deliver the project on time and within budget.
- > Ensure quality and compliance with specifications.
- > Manage risks and resolve issues efficiently.
- > Communicate clearly with stakeholders.

Tools & Techniques Used:

- > Gantt charts, CPM/PERT, MS Project, Primavera.



Electrical Engineering

We offer comprehensive Industrial Electrical Engineering services, covering the design, development, installation, operation, and maintenance of electrical systems across industrial sectors such as manufacturing, refineries, steel plants, and power generation facilities. By integrating power, control, and automation technologies, we ensure safe, reliable, and efficient plant performance.

1. Conceptual & Planning Stage

- Identifying project requirements and objectives.
- Conducting feasibility studies and site surveys.
- Estimating load demand and defining system specifications.
- Preparing project scope, budget, and timelines.

2. Design & Engineering Stage

- Creating single-line diagrams (SLDs), schematics, and layout drawings.
- Selecting electrical equipment (transformers, switchgear, cables, etc.).
- Designing power distribution, control, and protection systems.
- Ensuring compliance with electrical codes and standards.

3. Procurement Stage

- Preparing technical specifications and bill of materials (BOM).
- Vendor evaluation and selection.
- Reviewing and approving vendor drawings and documents.
- Coordinating with suppliers for timely material delivery.

4. Installation & Commissioning Stage

- Installation of electrical panels, wiring, and equipment.
- Testing of continuity, insulation, and protection systems.
- System energization and performance verification.
- Final commissioning and handover documentation.

5. Operation & Maintenance Stage

- Routine inspection, preventive maintenance, and troubleshooting.
- Performance monitoring and energy optimization.
- Upgrading systems for efficiency and safety improvements.
- Maintaining records, reports, and maintenance logs.



Automation Engineering

We provide comprehensive Automation Project solutions that encompass several well-defined stages to ensure the smooth execution and successful implementation of automated systems. Our systematic approach covers every phase of the project lifecycle — from concept to commissioning — as outlined below:



Project Definition & Planning

This initial phase involves understanding the client's requirements, process specifications, and automation goals. It includes feasibility studies, defining the project scope, setting timelines, and preparing the overall project schedule and budget. A detailed project plan is developed to ensure that all engineering, procurement, and commissioning activities are well-coordinated.

System Design & Engineering

In this phase, the automation system architecture is designed. It includes the preparation of control philosophies, I/O lists, instrument data sheets, control panel design, and system layout. The selection of appropriate PLCs, DCS, sensors, actuators, and communication networks (such as Profibus, Profinet, or Modbus) is finalized. The objective is to ensure that the system design meets operational and safety requirements.

Procurement & Fabrication

This stage involves preparing detailed technical specifications and Bill of Quantities (BOQ), selecting qualified vendors, and procuring all necessary components such as PLC panels, field instruments, and control cabinets. Fabrication of electrical and control panels, along with quality checks, is carried out as per the approved design and standards.

Software Design

The software design phase includes developing PLC or DCS logic, SCADA/HMI screens, and database configuration. Control sequences, interlocks, and alarms are programmed and tested. Simulation and validation of control logic are performed to ensure reliable and efficient system operation before deployment.

Installation & Commissioning

This phase includes the site installation of instruments, panels, and cabling, followed by loop checking and signal testing. The system is powered up and tested in real-time conditions through Site Acceptance Tests (SAT). Commissioning ensures that all components function correctly and that the process runs as per design specifications.

Integration & Optimization

After commissioning, the system is integrated with existing plant systems, such as Manufacturing Execution Systems (MES) or Enterprise Resource Planning (ERP). The performance of the control loops and process parameters is optimized to achieve higher productivity, energy efficiency, and reliability. Operator training and system documentation are also completed during this stage.

Maintenance & Support

Once the system is operational, regular maintenance and technical support are provided to ensure sustained performance. This includes preventive and predictive maintenance planning, troubleshooting, and periodic upgrades to enhance system efficiency and extend equipment life.

Electrical and Automation Products

We manufacture industrial electrical panels designed for reliable and efficient power distribution, motor control, and automation in a wide range of industrial environments.

Our panels are built with high-quality components, ensuring safety, durability, and compliance with relevant industrial standards.

1. Power Panel –
 - LT PCC Up to 5000A
 - Motor Control Centre
 - Power Distribution Panel
 - APFC Pannel
 - Distribution Board etc.
 - VFD Panel
 - UPS DB
 - Isolator Panel
 - Lighting Panel
 - LT Busduct
2. Protection & Control Panel –
 - Relay Control Panel for HT & LT
 - Instrument Panel
 - PLC Control Panel
 - Control Desk
 - Operating Panel
 - HMI Panel
 - Server Panel
 - Local Control Panel
 - Annunciation Panel
3. Junction Box –
 - Power Junction Box
 - Control Junction Box
 - Lighting Junction Box
 - Instrument Junction Box
 - Junction Box with Die Cast Aluminium



Manufacturing Facility

> with our Associated Partner



Machine Shop



Machine / Assembly Shop



Material Handling & Fabrication Shop



Fabrication & Painting Shop

Machinery Facility



SL NO	DESCRIPTION	CAPACITY	QUANTITY	Year of Installation	MAKE
1	VTL Machine	1200 Dia Chak.	01 No.	2013	CRAFFENSTADEN - Germany
2	Horizontal Boring Machine	Arber 80 mm	01 No.	2008	WMW - Germany
3	Hobbing Machine	20 Module	01 No.	2007	LORENZE- GERMANY
4	Hobbing Machine	10 Module	01 No.	2009	O&E, USA
5	Shaping Machine	36" Stroke	01 No.	2006	VIVEKANANDA
6	Vertical Milling Machine	5 No. Capacity	01 No.	2012	TOSSE - Germany
7	Slotting Machine	18" Stroke Capacity	01 No.	2011	CGP - Germany
8	CNC Verticle Machine	2200 X 800	01 No.	2012	FIMU - Italy
9	VMC XTORN 1366	610 X 1500	01 No.	2023	BFW
10	Plane Machine	6'x12'	01 No.	2011	PUNJAB
11	Radial Drilling Machine	3" Capacity	01 No.	2009	ASQUITH-England
12	Centre Lathe Machine	20' between centers	01 No.	2009	PATHAK
13	Centre Lathe Machine	14' between centers	01 No.	2006	DBMT
14	Centre Lathe Machine	12' between centers	01 No.	2004	PATHAK
15	CNC Lathe Machine	8' between centers	03 Nos.	2021	BFW
16	Pillar Drill Machine		01 Nos.	2006	SKP
17	Hydraulic Machine	10 Ton	01 No.	2009	PRECISION
18	Tools & Tackles	Lot		As per Requirement	
19	Threading Machine	Up to 80 mm cap.	02 Nos.	As per Requirement	INDIGENOUS

SL NO	DESCRIPTION	CAPACITY	QUANTITY	Year of Installation	MAKE
1	CNC Oxyfuel & Plasma Cutting Machine	3500 x 15000 x 120 mm thk	01 No.	2023	ESAB
2	Hydraulic Machine	300 Ton	01 No.	2013	PRECISION
3	Double Head Pipe Boring Machine	380 TO 2000 mm length	01 No.	2013	WELDMAN
4	Plate Bending Machine	30mm Thk. X 2.5mtr. Width 55 MT. Capacity	01 No.	2009	Indian
5	Double Head Continuous Welding Machine		01 No.	2016	WELDMAN
6	Magnetic Base Drilling Machine	1.5" Capacity	02 Nos.	2007	KPT
7	Magnetic Core Drill Machine	1.5" Capacity	05 Nos.	2010, 2012, 2018, 2023	KRAFTEC
8	Plasma Cutting Machine	Upto 40mm Thk.	01 No.	2021	AMT
9	Hand Grinding Machine	8" wheel	04 Nos.	2006, 2008, 2011 & 2012	BOSCH
10	Hand Grinding Machine	4" wheel	02 Nos.	2008 & 2012	BOSCH
11	Pencil Grinding Machine		02 Nos.	2007 & 2013	BOSCH
12	Angle Grinding Machine	8"	01 No.	2012	BOSCH
13	Welding Generator		02 Nos.	2007 & 2010	KJELLBERG
14	Welding Transformer	(3KVA)	05 Nos.	2005, 2007, 2008, 2012 & 2012	DASCO, WELDMAN
15	Co2 (Mig) Welding Machine	Auto K400 Amps.	10 Nos.	2007, 2008, 2010, 2012, 2020, 2022	ESAB,
16	Tools & Tackles	Lot		As per Requirement	
17	Threading Machine	Up to 80 mm cap.	02 Nos.	As per Requirement	INDIGENOUS
18	Generator	40KV	01 No.	2009	KIRLOSKAR BLISS

Photo Gallery



Travelling Tripper



Shuttle Conveyor



Shuttle Trolley with Conveyor



Conventional Belt Conveyor



Telescopic Belt Conveyor



Belt Feeder



Rotary Conveyor



Manual Rod Gate



Motorized Rack & Pinion Gate



Motorized Sector Gate



Motorized Flap Gate



Diverter/Prism Gate



Diverter Chute with Gate



Chute, Skirt & Liners



Rotary Divider



Coal Divider



Plough Feeder



Roller Conveyor



Conveyor Pulley



Conveyor Idlers with Bracket



Ladle Transfer Car



Hot Metal Ladle



Sprocket Assembly for PCM



Fabricated Heavy Structure

Quality & Improvement

> QA Manager also ensures Welders Test as per specification (ASME Sec. IX/AWS/DIN/IS) as applicable and maintain a record of continuity of the welders in particular job of welding within the essential variables.

> Wherever a new job calls for specific type of welding, the relevant Welders are tested fresh with the new set up.

Only those welders who pass the test are allowed for welding in that particular job. All such records are maintained.

> Inspections are being carried out at the following stages in order to ensure the quality of the product being manufactured:

- * Incoming Material Control
- * In Process (Fabrication/Machining) Control
- * Assembly/Finished Material Control.

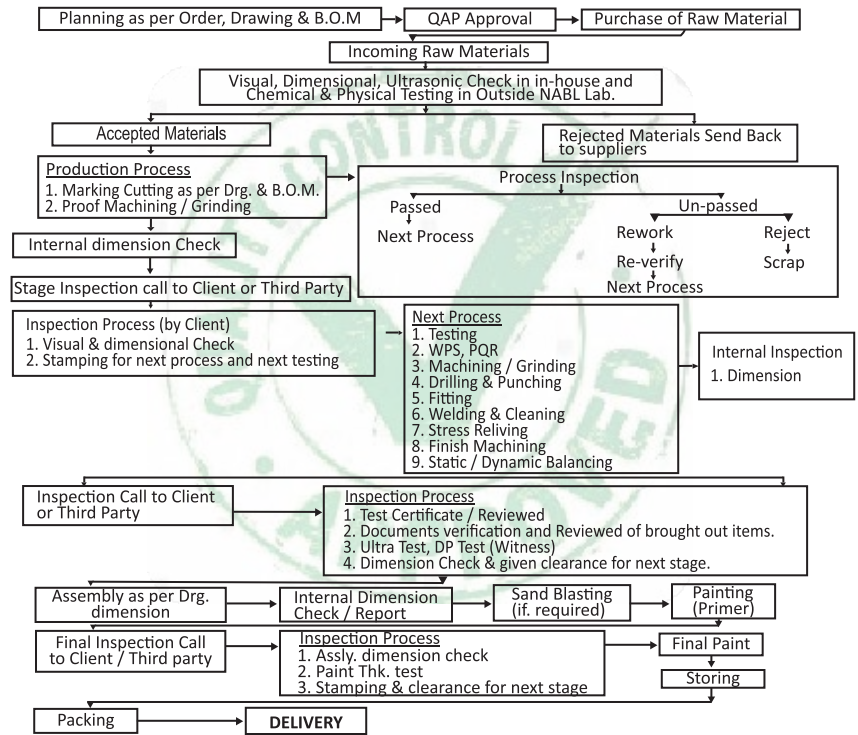
> INSPECTION & TESTING

* It is ensured that on receipt, in process and in the Final stage, Inspection and testing is carried out to get the manufactured item in conformance to drawing and specification requirements.

* All In process Inspection and testing is performed in proper sequence as indicated in the QA Plan. Observations of Inspection and testing are recorded in the prescribed format as Quality Documents.

* When it is called for in the Contract, inspection by the client or its authorized representatives are arranged either in the specific stage or during final inspection of the completed item. In such case, dispatch of the item is done after acceptance of the item by the client.

PROCESS CONTROL FLOW CHART



Measuring / Testing Equipment

ULTRASONIC FLAW DETECTOR:-

ULTRASONIC FLAW DETECTOR:-

Model No: EINSTEIN-II (DGS),

Sl. No: E2477-0310

DIGITAL HARDNESS TESTER:-

Model No.: D-2.1,

Sl. No: 004

DIGITAL COATING THICKNESS GAUGE (rANGE 0-1250 um):-

Sl. No: NS15798,



INSIDE MICROMETER (MITUTOYO MAKE)

50 - 300 mm - 1 No

50 - 500 mm - 2 Nos.

BEVEL PROTECTOR

40QD (0 - 90) Degree - 1 No

SURFACE PLATE - 1 No.

STEEL SCALE / TAPE

0 - 1000 mm - 1 No

0 - 5000 mm - 1 No.

0 - 10000 mm - 1 No

VERNIER CALIPER

(MITUTOYO MAKE)

0 - 300 mm - 1 No

0 - 600 mm - 1 No.

0 - 1000 mm - 1 No

0 - 2000 mm - 1 No

DIAL VERNIER CALIPER

(MITUTOYO MAKE)

0 - 300 mm - 1 No

DIGITAL VERNIER CALIPER

(MITUTOYO MAKE)

0 - 300 mm - 1 No



OUTSIDE MICRO MATER (MITUTOYO MAKE)

00 - 25 mm - 1 No

25 - 50 mm - 1 No

50 - 150 mm - 1 No

150 - 300 mm - 1 No

300 - 400 mm - 1 No

400 - 500 mm - 1 No

500 - 600 mm - 1 No

HEIGHT / DEPTH GAUGE (MITUTOYO MAKE)

0 - 300 mm - 1 No

0 - 600 mm - 1 No.

0 - 1000 mm - 1 No

DIAL BORE GAGE (MITUTOYO MAKE)

15 - 50 mm - 1 No

30 - 55 mm - 1 No.

50 - 150 mm - 1 No

150 - 300 mm - 1 No

160 - 250 mm - 1 No

300 - 600 mm - 1 No

PRESSURE GAGE

0 - 400 Kg/cm² - 1 No.

0 - 5 Kg/cm² - 1 No.

DEPTH CALIPER

0 - 200 mm - 1 No

LIST OF TESTING / Q.C. FACILITIES (IN HOUSE):-

- | | |
|---------------------------------|---------------------------------------|
| i) ULTRA SONIC (UT) TEST. | ix) WATER LEVEL TEST. |
| ii) HARDNESS TEST. | x) DIMENSIONAL TEST. |
| iii) STATICALLY BALANCING TEST. | xi) STRESS RELIEVING (COIL HEAT) |
| iv) RUBBER HARNESS TEST. | xii) SAND BLASTING. |
| v) DYEPENITRENT TEST. | xiii) SPRAY PAINT. |
| vi) DUST & WATER PROOF TEST. | xiv) CO ₂ / ARGON WELDING. |
| vii) FRICTION FACTOR TEST. | xv) PLASMA CUTTING. |
| viii) RUNOUT TEST. | |

LIST OF TESTING / Q.C. FACILITIES (OUTSOURCESS):-

- i) METALLURGICAL (Chemical, Physical /Mechanical, Micro Structure) TEST.
- ii) DYNAMICALLY BALANCING.
- iii) MAGNETIC PARTICLE (MPI) TEST.
- iv) HARDNESS TEST.
- v) ULTRASONIC TEST.
- vi) PAINT THICKNESS TEST.
- vii) STRESS RELIEVING (FURNACE / COIL HEATING).

Our approved Heat Treatment Unit (Govt. approved)

- a) SUPER HEAT TREATMENT
- b) LUNA HEAT TREATMENT
- c) ARPAN ENTERPRISE.

Our approved Laboratory which is NABL & Govt. approved

- a) Inspection Survey & Surveillance (India) Pvt. Ltd.
- b) I.R.C Industrial Research Consultancy Pvt. Ltd.,
- c) Metallurgical Research and Testing Lab.
- d) P. P. Metallurgical Laboratory.

Our approved Laboratory which is Govt. approved

- a) Metal Testing & Inspection Services.
- b) Metals & Minerals Testing Laboratory.

Technology Partnership

Intellimetal shares a rare distinction to be the indigenous technology partner to several international technology leader with primary focus on the metallurgical sector

Technology partnership is not only limited to sales support but extend beyond to service, supply of non critical components resulting in lower ownership cost, maintaining the same quality

Some of our technology partners in chosen technology areas are:

- Continuous Wire Rod Mill
- Aluminium / Copper –



- Complete finishing line solutions
in steel and aluminium –



- ZLD, Dryers and process equipment –



Source of Major Materials

- | | |
|---|---|
| ■ TATA STEEL | : All kinds of Pipe & Plate. |
| ■ SAIL
(Steel Authority of India Ltd.) | : Plate-Different Composition, ISMB, ISMC, ISA. |
| ■ JSPL
(Jindal Steel & Power Ltd.) | : Plate-Different Composition, ISBM, ISMC, ISA. |
| ■ JINDAL STAINLESS STEEL | : SS Plate-Different Grade. |
| ■ SKF India Ltd.
(Global Registration) | : All Types of Bearing & Bearing Block. |
| ■ FAG Bearings India Ltd. | : All types of Bearing & Bearing Block. |
| ■ SSAB | : Handox & Toolox brand Liner Plate. |
| ■ JINDAL TUBE | : Pipe. |
| ■ Ringfeeder VBGMBH
(Germany) | : All kind of Locking Assembly. |
| ■ Utkarsh Tubes & Pipes Ltd. | : Pipe. |
| ■ SKIPPER LTD. | : Pipe. |
| ■ HARYANA TUBES LTD. | : Pipe. |
| ■ JINDAL LTD. | : Pipe. |
| ■ BHARAT FORGE Ltd. | : Forging Item (Round, Wheel etc.) |
| ■ Vikrant Forging | : Forging Item (Round, Wheel etc.) |
| ■ VSP | : Round. |
| ■ Various Dealers | : Plate, Pipe, Forging items or any small components as case to case basis. |

